



# Follow the rules, and happy bicycling in Japan!

Always ride on the left side of the road!

In Japan, cars drive on the left side of the road. Ride your bicycle on the vehicle lane instead of on the sidewalk, or ride on the left road strip/shoulder. Bicycles are classified as vehicles.



Ride your bicycle where there is a road sign/markings!

Sidewalks are for pedestrians, but cyclists can also use them. Regulations stipulate the provision that you may ride a bicycle on the sidewalk where a road sign/markings allows you to do so.

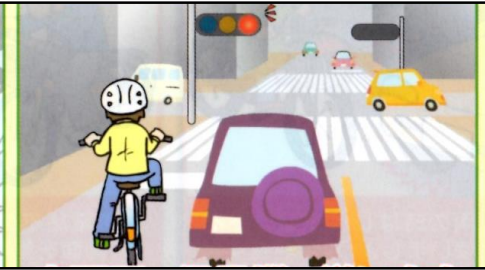


Give the right way of pedestrians!



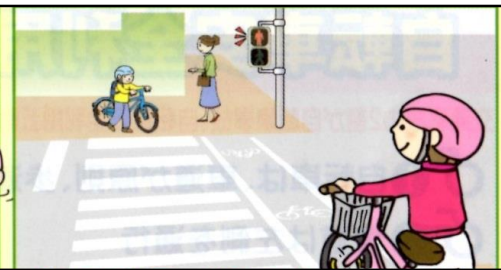
Follow the traffic light in front of you!

When riding a bicycle on the vehicle lane . . .



Follow the traffic light for motor vehicles.

When riding on the sidewalk . . .



Follow the traffic light for pedestrians.

When there is a traffic light for pedestrians with a sign indicating both pedestrians and bicycles in Chinese characters . . .



Follow the traffic light.

Follow the traffic light in front of you; also, see what is moving in which direction to avoid traffic accidents. What is required is the right judgement at the right timing.



The following acts are traffic violations.

Using a mobile phone when riding

Riding under the influence of alcohol



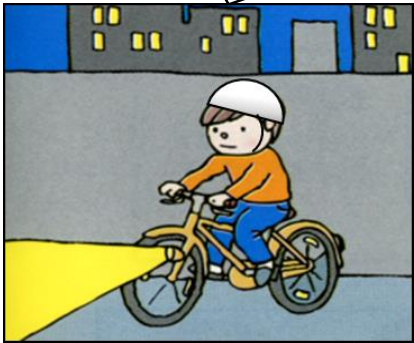
Using an umbrella when riding



Other things you are required to do on traffic rules

Stop at intersections and look both ways for safety before crossing the stop line/sign.

Use bicycle lights at night



Know the following traffic signs as cyclists!



No entry for vehicles



Vehicles must stop and check the safety before entering into an intersection.